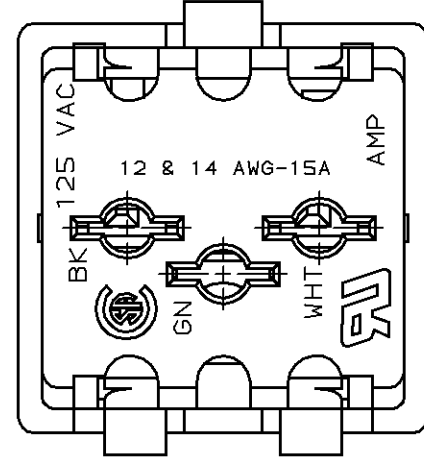
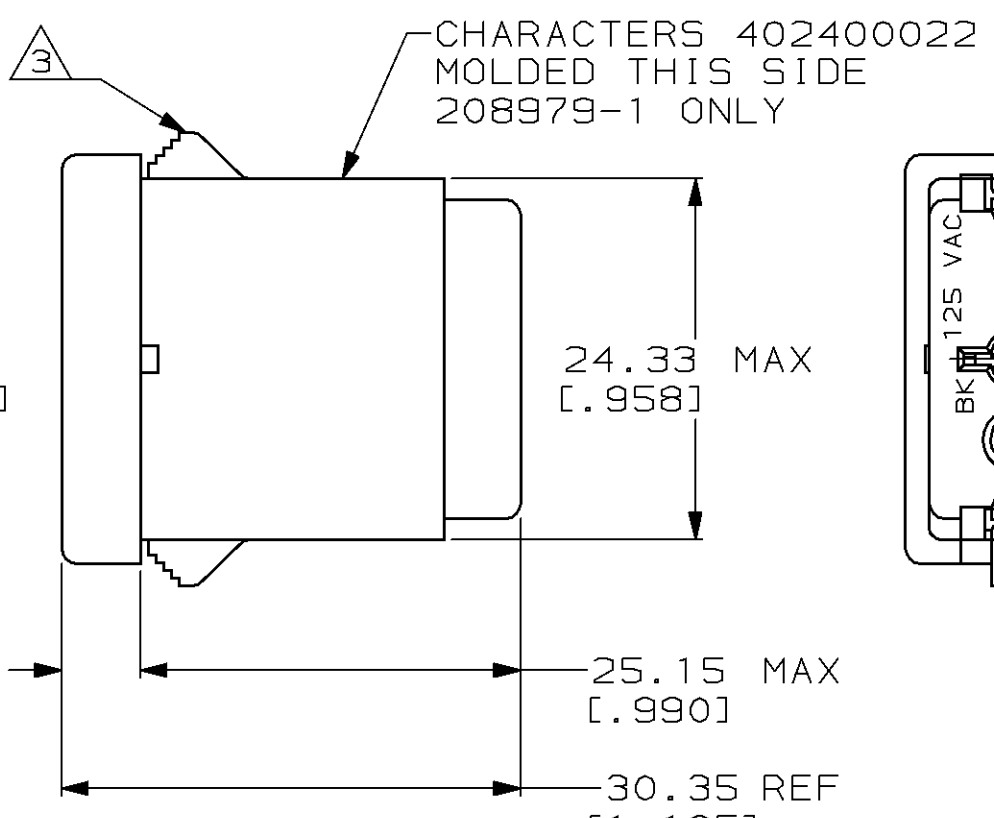
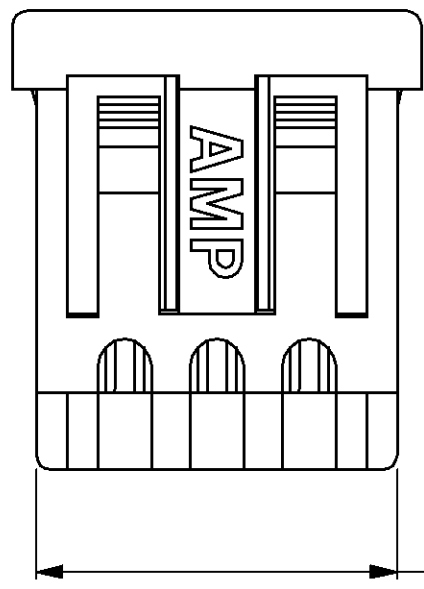
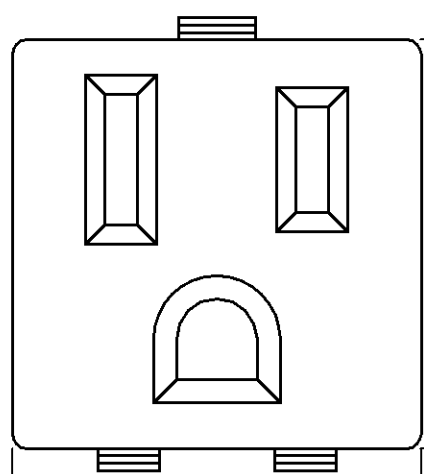
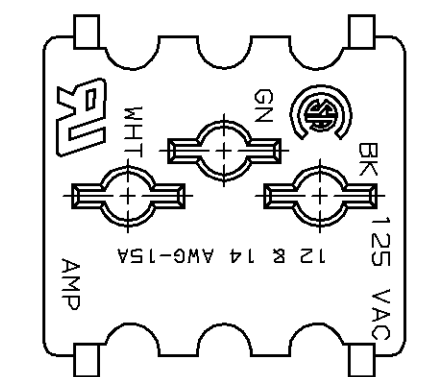
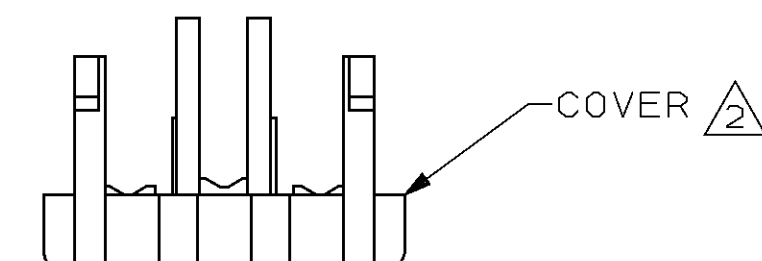
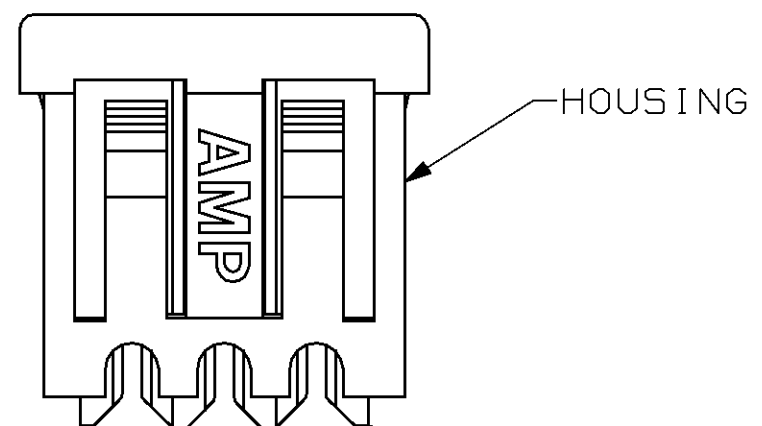
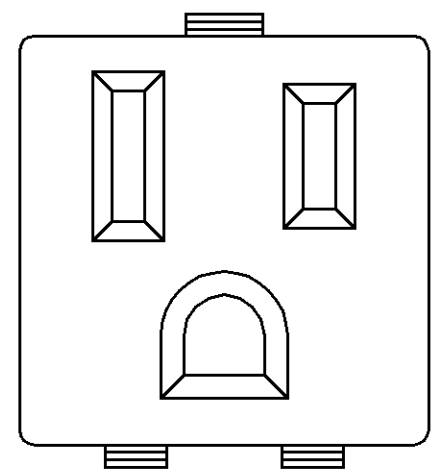
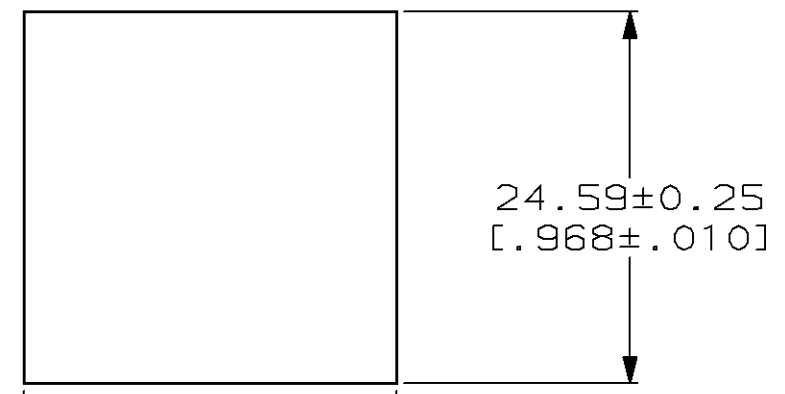


LOC	DIST	P	F	ZONE	LTR	DESCRIPTION	DATE	APPD
BD	39				W	OBS 1--5 PER EC 0020-1039-95	06 SEP 95	MM
					Y	OBS -9 PER EC 0020-1325-95	20 FEB 96	MM



ASSEMBLED VIEW



24.59±0.25 [.968±.010]

RECOMMENDED PANEL CUTOUT

- CONTACTS TO ACCEPT 14 AWG AND 12 AWG SOLID COPPER WIRE OR 14 AWG STRANDED WIRE WHEN USED WITH AMP 205 SERIES FASTON™ TAB.
- COVER PACKAGED UNASSEMBLED.
- SNAP IN FEATURE ACCOMODATES 0.76-1.78 [.030-.070] PANEL THICKNESS ONLY.
- ALL HOUSINGS AND COVERS ARE UL 94V-2 RATED UNLESS OTHERWISE SPECIFIED.
- UL 94V-0 RATED HOUSING AND COVER.

HOUSING COLOR	PART NO
OBSOLETE	-
	1-208979-5
	PUTTY WHITE
	1-208979-4
OBSOLETE	BLACK
	1-208979-3
	ORANGE
	1-208979-2
	GRAY
	1-208979-1
	GRAY
	1-208979-0
OBSOLETE	CREAM
	208979-9
OBSOLETE	WHITE
	208979-7
	ALMOND
	208979-4
	BLACK
	208979-2
OBSOLETE	BLACK
	208979-1

DO NOT SCALE PRINT. UNLESS SPECIFIED DIMENSIONS IN mm [INCHES] TOLERANCES ON : 2 PLC DEC ± - 3 PLC DEC ± - ANGLES ± -		DR 5-1-91 B. MOYER	AMP Incorporated Harrisburg, PA 17105-3608
MATERIAL HOUSING: NYLON, SEE TABLE COVER: NYLON, BLACK CONTACTS: BRASS		CHK 5-7-91 R STONE	
FINISH		APPD 5-7-91 D L ROCKER	NAME
		APPD 5-7-91 J FULPONI	RECEPTACLE KIT, UNASSEMBLED, WITH COVER, CONVENIENCE OUTLET
		PRODUCT SPEC	SIZE
		APPLICATION SPEC	CAGE CODE
			DRAWING NO
			208979
		WEIGHT	SCALE
			2:1
			SHEET
			1 OF 1